

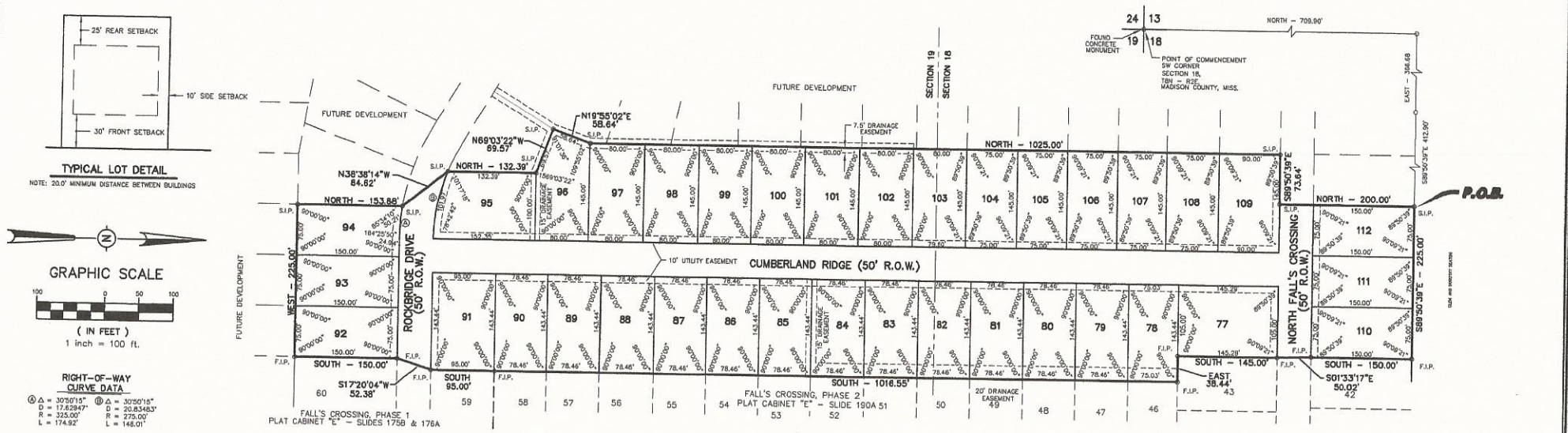
**NOTES:**

1. THIS SUBDIVISION LIES WITHIN THE LIMITS ESTABLISHED FOR ZONE 18 (NO SHADING) ACCORDING TO FIRM MAP NUMBER 28089C0395 F, EFFECTIVE MARCH 17, 2010.
  2. DIMENSIONS ALONG CURVES ARE CHORD DISTANCES.
  3. SURVEY CLASSIFICATION "B".
  4. REFERENCE MERIDIAN: GPS (GRID)
  5. IRON PINS SET AT ALL LOT CORNERS.
  6. AREA = 11.577 ACRES, MORE OR LESS.
- F.I.P. = DENOTES FOUND 1/2" IRON PIN  
S.I.P. = DENOTES SET 1/2" IRON PIN

# FALL'S CROSSING, PHASE 3

SITUATED IN THE  
SOUTH 1/2 OF THE SOUTHWEST 1/4 OF SECTION 18 AND  
NORTH 1/2 OF THE NORTHWEST 1/4 OF  
SECTION 19, TOWNSHIP 8 NORTH - RANGE 2 EAST  
MADISON COUNTY, MISSISSIPPI

PLATTED & SURVEYED BY  
**H D LANG AND ASSOCIATES, INC.**  
ENGINEERS / LAND SURVEYORS  
4099 NORTH STATE STREET  
JACKSON, MISSISSIPPI  
1601 362-4986



**SURVEYOR'S CERTIFICATE**  
STATE OF MISSISSIPPI  
COUNTY OF MADISON

I, Donald L. McDonald, Professional Surveyor, do hereby certify that at the request of the undersigned Owner, I have subdivided and platted the following described land being situated in the South 1/2 of the Southwest 1/4 of Section 18 and in the North 1/2 of the Northwest 1/4 of Section 19, T8N-R2E, Madison County, Mississippi:

Commence at an existing concrete monument marking the Southwest corner of the aforesaid Section 18, T8N-R2E and run thence North for a distance of 709.90 feet to a point; run thence East for a distance of 368.88 feet to a point; run thence South 89 degrees 50 minutes 39 seconds East for a distance of 412.80 feet to a set iron pin marking the POINT OF BEGINNING of the parcel of land herein described; from said POINT OF BEGINNING, continue thence South 89 degrees 50 minutes 39 seconds East for a distance of 225.00 feet to an existing iron pin marking the Northwest corner of Fall's Crossing, Phase 2, a subdivision according to the map or plat thereof, on file and of record in the office of the Chancery Clerk of Madison County at Canton, Mississippi, as now recorded in Plat Cabinet "E" at Slide 190-A; run thence along the West line of said Fall's Crossing, Phase 2 the following bearings and distances: South for a distance of 150.00 feet to an existing iron pin; South 01 degrees 33 minutes 17 seconds East for a distance of 50.02 feet to an existing iron pin; South for a distance of 148.00 feet to an existing iron pin; East for a distance of 38.44 feet to an existing iron pin; South for a distance of 1,016.55 feet to an existing iron pin marking the Southwest corner thereof; said point also being the Northwest corner of Lot 59, Fall's Crossing, Phase 1, a subdivision according to the map or plat thereof, on file and of record in the aforesaid Chancery Clerk's office, as now recorded in Plat Cabinet "E" at Slides 175-B and 176-A; leaving said West line of Fall's Crossing, Phase 2, run thence along the West line of said Fall's Crossing, Phase 1 the following bearings and distances: South for a distance of 95.00 feet to an existing iron pin; South 17 degrees 20 minutes 04 seconds West for a distance of 52.38 feet to an existing iron pin; South for a distance of 150.00 feet to an existing iron pin marking the Southwest corner of said Fall's Crossing, Phase 1; leaving said West line of Fall's Crossing, Phase 1, run thence West for a distance of 225.00 feet to a set iron pin; run thence North for a distance of 133.89 feet to a set iron pin; run thence North 38 degrees 38 minutes 14 seconds West for a distance of 84.62 feet to a set iron pin; run thence North for a distance of 132.39 feet to a set iron pin; run thence North 89 degrees 03 minutes 22 seconds West for a distance of 89.57 feet to a set iron pin; run thence North 19 degrees 55 minutes 02 seconds East for a distance of 58.64 feet to a set iron pin; run thence North for a distance of 1,025.00 feet to a set iron pin; run thence South 89 degrees 50 minutes 39 seconds East for a distance of 73.64 feet to a set iron pin; run thence North for a distance of 200.00 feet to the POINT OF BEGINNING, containing 11.577 acres, more or less.

Witness my signature this \_\_\_\_\_ day of \_\_\_\_\_, 20\_\_\_\_.

Donald L. McDonald, Professional Surveyor

**SURVEYOR'S CERTIFICATE OF COMPLIANCE**  
STATE OF MISSISSIPPI  
COUNTY OF MADISON

I, Donald L. McDonald, Professional Surveyor, do hereby certify that the monuments and markers shown hereon are in place on the ground and the plat and plan shown and described hereon are a true and correct representation of a survey to the accuracy designated in the subdivision regulations for Madison County, Mississippi.

Witness my signature this \_\_\_\_\_ day of \_\_\_\_\_, 20\_\_\_\_.

Donald L. McDonald, Professional Surveyor

**CERTIFICATE AND DEDICATION OF OWNER**  
STATE OF MISSISSIPPI  
COUNTY OF MADISON

I, William J. Shanks, Co-Manager of SSR Development, LLC, a Mississippi Limited Liability Company, do hereby certify that the aforementioned is the owner of the land described in the foregoing certificate of Donald L. McDonald, Professional Surveyor, and that as Co-Manager of said SSR Development, LLC, has caused the same to be subdivided and platted as shown hereon, and hereby adopt this plat designated the same as Fall's Crossing, Phase 3 and dedicates the street rights-of-ways and drainage easements as shown hereon for public use forever.

Witness my signature this \_\_\_\_\_ day of \_\_\_\_\_, 20\_\_\_\_.

SSR Development, LLC, A Mississippi Limited Liability Company

By: William J. Shanks, Co-Manager

**ACKNOWLEDGEMENT**  
STATE OF MISSISSIPPI  
COUNTY OF MADISON

Personally appeared before me, the undersigned officer in and for the jurisdiction aforesaid, the within named William J. Shanks, who acknowledged to me that he is Co-Manager of SSR Development, LLC, a Mississippi Limited Liability Company, the owner, who acknowledged to me that he signed and delivered this plat and the certificate thereon as his own act and deed, for and on behalf of said SSR Development, LLC, after being authorized so to do, and Donald L. McDonald, Professional Surveyor, who acknowledged to me that he signed and delivered this plat and the certificates thereon as his own act and deed, on the day and year herein mentioned.

Given under my hand and seal of office this the \_\_\_\_\_ day of \_\_\_\_\_, 20\_\_\_\_.

Notary Public My Commission Expires: \_\_\_\_\_

**COUNTY ENGINEER'S RECOMMENDATION**  
STATE OF MISSISSIPPI  
COUNTY OF MADISON

I have examined this plat and find it conforms to all conditions set forth on the preliminary plat as approved by the Board of Supervisors of Madison County, Mississippi and thus recommend final approval.

By: Rudy Warnock, County Engineer

**APPROVAL OF THE BOARD OF SUPERVISORS**  
STATE OF MISSISSIPPI  
COUNTY OF MADISON

I hereby certify that this is a true copy and that this plat was approved by the Board of Supervisors of Madison County in session on the \_\_\_\_\_ day of \_\_\_\_\_, 20\_\_\_\_.

Madison County Board of Supervisors

By: Karl M. Bonks, Board President

**CERTIFICATE OF COMPARISON**  
STATE OF MISSISSIPPI  
COUNTY OF MADISON

We, Ronny Lett, Chancery Clerk and Donald L. McDonald, Professional Surveyor, do hereby certify that we have carefully compared this plat of Fall's Crossing, Phase 3 with the original thereof, as made by said Donald L. McDonald, Professional Surveyor, and find it to be a true and correct copy of said map or plat.

Given under my hand and seal of office this the \_\_\_\_\_ day of \_\_\_\_\_, 20\_\_\_\_.

Donald L. McDonald, PLS Ronny Lett, Chancery Clerk

By: \_\_\_\_\_ D.C.

**FILING AND RECORDATION**  
STATE OF MISSISSIPPI  
COUNTY OF MADISON

I, Ronny Lett, Clerk of the Chancery Court in and for said County and State, do hereby certify that the final plat of Fall's Crossing, Phase 3 was filed for record in my office on this the \_\_\_\_\_ day of \_\_\_\_\_, 20\_\_\_\_, and was duly recorded in Plat Cabinet \_\_\_\_\_ at Slide \_\_\_\_\_ of the records of maps and plats of land in Madison County, Mississippi.

Given under my hand and seal of office this the \_\_\_\_\_ day of \_\_\_\_\_, 20\_\_\_\_.

Ronny Lett, Chancery Clerk By: \_\_\_\_\_ D.C.